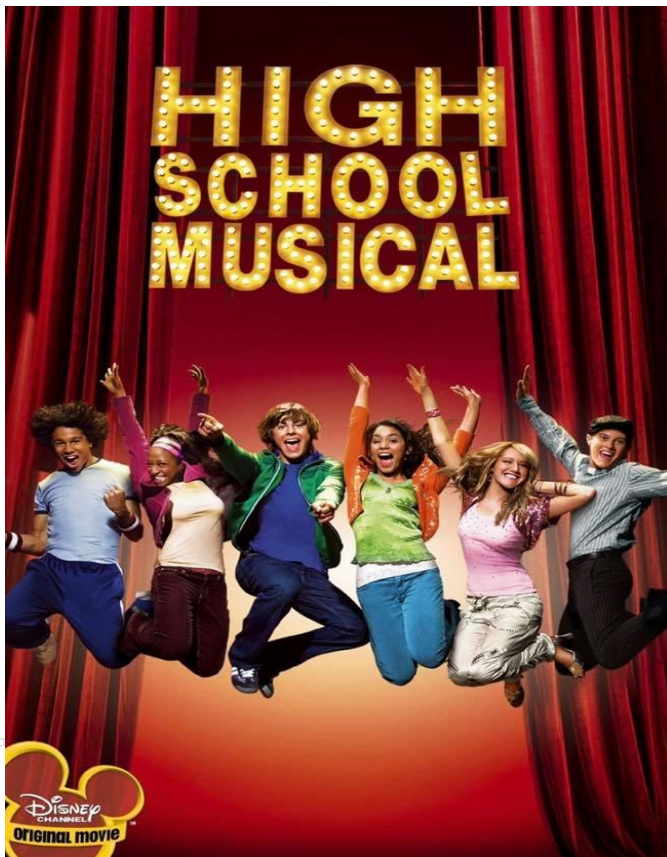


**You are invited to our  
Technology & Arts Community Days.**

Come and spend some time with your students in their class so they can show you what they have learnt. See dates and times further on in the newsletter.



**Exceptional Learners  
Exceptional Place  
Whakaharahara  
ā konga  
Whakaharahara wāhi**



**Daily Student Notices ...**

These are published daily on our school website [www.fairfieldintermediate.school.nz](http://www.fairfieldintermediate.school.nz).

**School Hours ...**

8.45	School Starts
10.45 - 11.05	Interval
12.35 - 1.25	Lunch
2.55	School Ends

**School Absentees ...**

Phone: 855 9718 Ext 1  
Text: 021 250 5968  
Email: [absent@fairfieldintermediate.school.nz](mailto:absent@fairfieldintermediate.school.nz)

This should be done by 9.00 am each and every morning your child is away.

Absenteeism, due to ill health, of more than three consecutive days must be accompanied by a doctor's certificate.

**TICKETS ARE NOW AVAILABLE.**

**Online - <https://www.trybooking.co.nz/BJT>  
OR pick up an order form from the Student Centre.**

**\$10 ADULTS, \$5 STUDENTS  
\$20 FAMILY (2 Adults and 3+ students)  
Monday 24 June 2019 @ 7pm  
Tuesday 25 June 2019 @ 7pm  
Wednesday 26 June 2019 @ 7pm**

**Fairfield Intermediate Auditorium**

## Kia Ora Koutou, Greetings

Welcome back to term two and a special warm welcome to our new students and their families that have joined our Fairfield Intermediate School Community. We have had a great start to the term and have been impressed with how the students have settled back into school life. We have hit the ground running with lots of exciting learning and events already taking place in the school. We had the Science Roadshow visiting at the beginning of the week and the students have been getting fully involved in both class learning and extracurricular learning activities. Our lunchtime House football competition is also heating up and the teachers appear to be just as invested in the outcome as the students!



I would like to take this opportunity to inform you that on Tuesday 4 June we will be having a Teacher Only Day, which means that the school will be closed for students while as a staff we undertake professional learning in the area of writing. We have external facilitators from 'Write that Essay' coming into work with our staff for the day. We apologise in advance for any inconvenience that this may cause, but we believe that the benefits from the professional learning will have positive benefits for your child and their learning, specifically in the area of writing which is a key area of focus at Fairfield Intermediate in 2019.

Please do not forget to get your tickets for our school production, High School Musical, taking place later in the term. The students have been busy rehearsing and they are super excited about this upcoming event. We would love to see as many of you there as possible.

Another reminder that next week, on Wednesday 8 May, school will finish at 12.35 pm as we will be joining our colleagues at an NZEI Union Meeting, hosted here at Fairfield Intermediate School. We would like to apologise for any inconvenience caused at this time and once again would like to thank you for your support.

Have a lovely weekend.

Kind regards.

**Angela Walters**  
Acting Principal



Wednesday 8 May	<b>SCHOOL CLOSED from 12.35 pm</b> for NZEI Paid Union Meeting
Monday 13 May	<b>Technology &amp; Arts Community Day</b> Nikau House 11:05am - 12:35pm Kowhai House 1:30pm - 2:55pm
Tuesday 14 May	<b>Technology &amp; Arts Community Day</b> Totara House 9:15am - 10:40am Rimu House 11:05am - 12:35pm Kauri House 1:30pm - 2:55pm
Tuesday 21 May	WIS Football
Friday 31 May	Arbor Day
Monday 3 June	Queen's Birthday – <b>NO SCHOOL</b>
Tuesday 4 June	Teacher Only Day – <b>SCHOOL CLOSED</b> WIS Futsal (further information to come)



## Homestay Families Required

Fairfield Intermediate School families are required for a group of lovely Japanese students (14 year olds) for 3 nights from 6-9 June 2019. This is a paid experience. All interest and enquiries, please email Pennie Braithwaite, Director of International Students, Phone 07 855 9718 (Ext 860) or Email [pbraithwaite@fairfieldintermediate.school.nz](mailto:pbraithwaite@fairfieldintermediate.school.nz).

**A BIG THANK YOU ... to the Fairfield Intermediate School PTA for all their hard work they do in fundraising to supply resources for the staff and students. Their latest contribution are funky coloured handballs for all the classrooms so students can play handball during interval and lunch.**



### **Waikato Children's Literature Quiz**

The Waikato Children's Literature Quiz is always tightly contested and challenges even the most avid of readers. This year was no different. From Greek mythology to Sponge Bob, the contestants battled their way through ten rounds to place a fabulous fifth (Libby, Theo, Lauren and Amy) and sixth (Bianca, Andrew, Amira and Aminah), with just one point separating the two teams. Congratulations to Southwell School who won the competition with a score of 85, just five points ahead of our team. If you too are a voracious reader, look out for trials to join our team next year.

This year is an election year for the Board of Trustees and the election date of 7 June has been set. We are looking for three parent trustees. Are you able to contribute to the life of Fairfield Intermediate in this way? Experience is a bonus but not necessary and there is lots of training and support offered through the New Zealand Trustees Association. We are also keen to see a good representation of our community around the table, so if this sounds like you and you are wanting some more information, please head to <https://www.trustee-election.co.nz/becoming-a-trustee/> or email Rebecca Renner at [BOTchair@fairfieldintermediate.school.nz](mailto:BOTchair@fairfieldintermediate.school.nz).



### **PTA Garage Sale Fundraiser Term 2**

The School PTA are running this year's garage sale set down for Saturday 29 June. So start gathering those unwanted household goods during the school holidays. *Bikes, furniture, clothing, books* – as long as it is not broken (no computer equipment or TV's please). Drop off during school hours to the school reception (Clarkin Road).

### **Anchor Bottle Cap Cup**

Keep those bottle caps coming in. We have until 6 June to blow the competition out of the water once again. First prize this year is a **new school van!** It is the same as last year, must be Anchor tops, please make sure these are checked before sending them to school. 10 House points per cap! Let's win a new van!



---

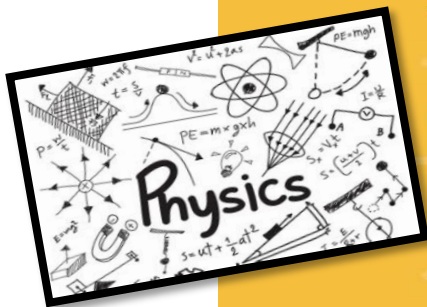
### **School Lunches Ordered Online**

**School lunches can now be ordered online 5 days per week.  
Register at <https://lunchorders.co.nz/customer/account/login/>**

---

COME AND JOIN US FOR OUR...

# TECHNOLOGY & ARTS DEPARTMENT COMMUNITY DAY!



PHYSICS - WORKSHOP - MUSIC  
- HAUORA - VISUAL ARTS -  
BIOTECHNOLOGY



Monday 13 May

Nikau House 11:05am - 12:35pm

Kowhai House 1:30pm - 2:55pm

Tuesday 14 May

Totara House 9:15am - 10:40am

Rimu House 11:05am - 12:35pm

Kauri House 1:30pm - 2:55pm



The Yummy Sticker promotion has kicked off again for this year, so a good time to remind everyone to collect Yummy stickers and bag cut-outs. This will be the 22<sup>nd</sup> year they have been running this promotion and they have another \$200,000 of sports gear for schools.

Stickers are due in at the end of Term 3 (Friday 27 September)

[https://www.yummyfruit.co.nz/.../08/Sticker\\_Collection\\_Sheet...](https://www.yummyfruit.co.nz/.../08/Sticker_Collection_Sheet...)



## Entertainment Books

The 2019/2020 Entertainment Books are here. The book is packed full of amazing offers. To order yours please click on the link –

**[SUPPORT US NOW!](#)**

Or contact – Lyndal Mills

Phone 027 7722 402 or Email [lyndalmills@extra.co.nz](mailto:lyndalmills@extra.co.nz)

Thank you for your support!

Fairfield Intermediate School PTA

# Community News ...



**St John's College**  
Preparing Young Men For Life

## INFORMATION EVENING

Parents and their sons who are considering enrolling at St John's College for 2020 are cordially invited to attend our Information Evening at 6.00pm on Tuesday 14 May (College Gym). The evening will start with an address by the Principal, Head Boy and a Year 9 student and will be followed by tours of the college, giving you an opportunity

to gain an insight to learning at the college. Please register your attendance to this free event online - <https://sjcopeneve19.eventzilla.net/>.

## SCARED HEART GIRLS' COLLEGE

**Open Day** is Thursday 9 May 2019. Parents/caregivers and students are invited to visit the school at 11.00am-12.30pm or 1.30pm-3.00pm. The Open Day Registration form can be completed by clicking the following link: [https://docs.google.com/forms/d/1l-X--DY9LmHENcpbZNe\\_4cJ62e7algZwfrBQJrdnx6M/edit](https://docs.google.com/forms/d/1l-X--DY9LmHENcpbZNe_4cJ62e7algZwfrBQJrdnx6M/edit).

For more information please visit [www.shgcham.school.nz](http://www.shgcham.school.nz).

## INDOOR CRICKET SKILLS SESSION

Looking at brushing up on your cricket skills over winter?

8 weeks - \$40 per person – Fridays 5.30 to 7.00 pm – Starts 3 May 2019.

Contact 07 847 1653 or [hamilton@actionindoorsports.com](mailto:hamilton@actionindoorsports.com).

## NUMBERWORKS'NWORDS

Help your child reach their potential with NumberWorks'nWords. Developed in New Zealand to support the New Zealand school curriculum, providing specialist Maths and English tuition for students from New Entrants to Year 11. By tailoring lessons for each student, setting and monitoring goals, using specialist tutors, and making it fun, they quickly grow in confidence and achieve amazing results. Phone 07 8538323 to book a free lesson at the centre in Rototuna or visit [www.numberworks'nwords.co.nz](http://www.numberworks'nwords.co.nz) for more information.

## HEAD LICE AND NIT ELIMINATION - SPRAY AND WALK AWAY

Spray on Scalp Only

No Itch One Spray

No Bad Smells

Customer Feed Back Available

Free Shipping for more than 10 litres or pick up in Hamilton

Shipping cost applies for less than 10 litres

\$20 1 litre will do a house of 4 for 10 days

\$2 Donation to Favourite School for every litre purchased.

Spray Mornings and Nights for 10 days

No More Sleepless Nights

No Chemicals

## SATURDAY MUSIC CLASSES

Enrolments are now open for Term Two 2019 at the Waikato Community School of Music (formerly Hamilton Community Centre of Music). **The first session is on Saturday 4 May.** The school caters for all ages and ability levels, including rising threes, retirees and absolute beginners. We offer both **group-format** music tuition in a range of instruments, as well as an Exam Stream **one-to-one** option for students who wish to prepare for exams and/or work towards NCEA credits. Group-format class fees range from \$39 to \$99 per term (average 8 lessons) depending on age and instrument. The enrolment fee for an instrument class includes participation in as many of our ensembles as the student wishes. Instrument hireage may be an option.

A music appreciation/readiness programme (*Music Makers*) is available from age 3. *Young Voices* children's choir caters for those ages 9+. Class times are between 8am and 1:00pm on Saturdays during primary school terms. The centre is located on the University of Waikato campus in Hillcrest. Contact us via our website <http://wasm.ac.nz/> or on 07 838 4611.

**FREE EAR CLINIC SERVICE FOR CHILDREN - Term 2 (2019)**

**All children must be accompanied by parent or caregiver.** For enquiries regarding this service please contact the phone numbers listed or Hamilton – phone 838 3565.

Visit the ear nurse for advice on glue ear assessment and management, wax/foreign body removal, grommet checks, treatment of discharging ears. **Please note clinics may be cancelled without notice due to unforeseen circumstances.**

<b>Hamilton Clinic by appointment</b>	<b>Monday - Friday</b>	51 Gallagher Drive, Hamilton	<b>By appointment</b>
<b>Hamilton</b>	Thursday, 16 May	Insoll Primary School, Insoll Ave	<b>8.30 – 3.30pm</b>
<b>Mobile</b>	Tuesday, 28 May	Melville Primary School, Ohaupo Road	<b>8.15 – 3.30pm</b>
	Friday, 31 May Monday, 1 July	Crawshaw Primary School, Crawshaw Drive	<b>8.30 – 3.30pm</b>